

CONSUMER INFORMATION

MATTY MATTEL™ Toys

YOU CAN TELL IT'S MATTEL™ Call us toll-free or write with any comments or questions about our products or service. Monday-Friday, 8:00 a.m.-6:00 p.m. Eastern Time. Outside U.S.A., see telephone directory for Mattel listing. Consumer Relations, Mattel, Inc., 333 Continental Blvd., El Segundo, CA 90245 U.S.A.

1 (800) 524-TOYS

CE CONFORMS TO THE SAFETY REQUIREMENTS OF ASTM F963.

We are dedicated to quality products.

2-YEAR WARRANTY

Mattel, Inc. warrants to the original consumer purchaser that this product will be free of defects in material or workmanship for two years (unless specified in alternate warranties) from the date of purchase. If defective, return the product along with proof of the date of purchase, postage prepaid, to Consumer Relations, 636 Girard Avenue, East Aurora, New York 14052 for replacement or refund at our option. This warranty does not cover damage resulting from unauthorized modification, accident, misuse, or abuse. In no event shall we be responsible for incidental, consequential, or contingent damages (except in those states that do not allow this exclusion or limitation). **Valid only in U.S.A.** This warranty gives you specific legal rights and you may also have other rights which vary from state to state. Some states do not allow the exclusion of incidental or consequential damages, so the above limitations may not apply to you.

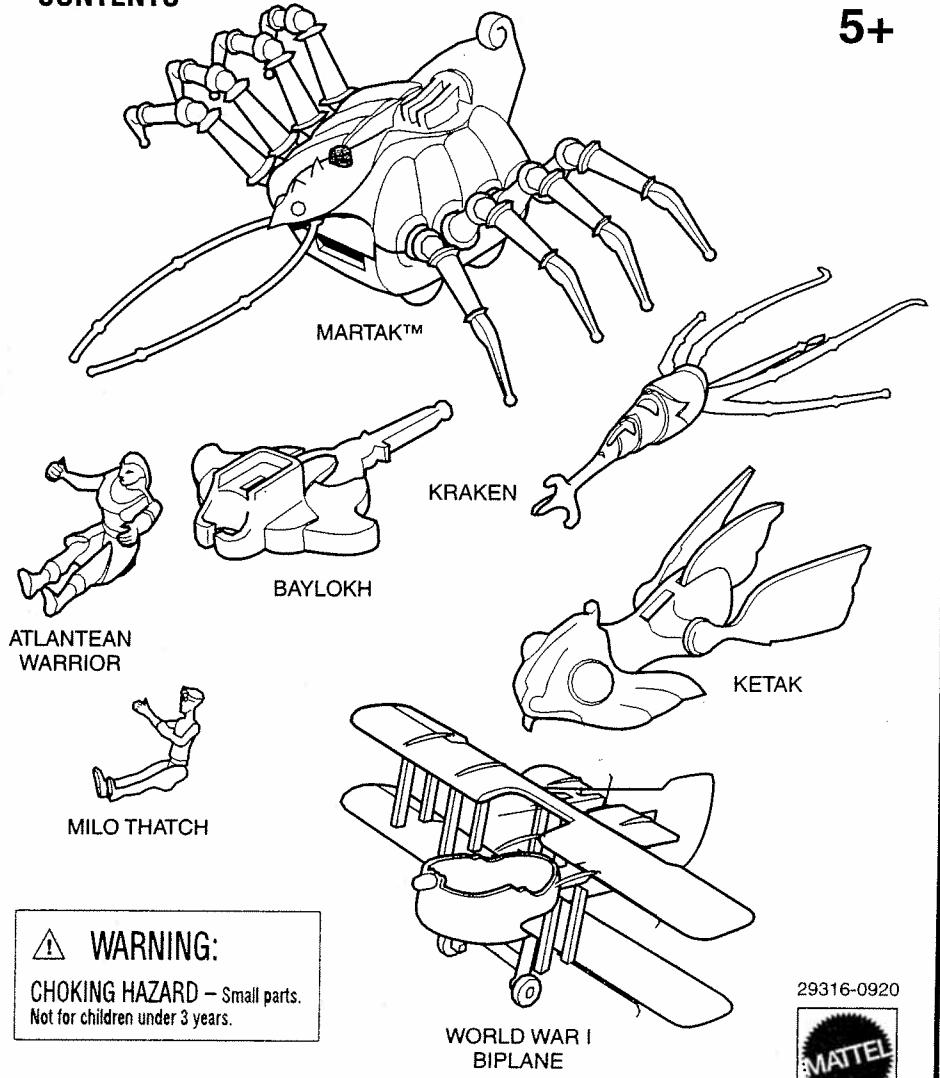
Send only the product to the address above. Send all correspondence to Consumer Relations, Mattel, Inc., 333 Continental Blvd., El Segundo, California 90245-5012, U.S.A. Or you may phone us toll-free at 1-800-524-TOYS, Monday-Friday, 8:00 a.m.-6:00 p.m. Eastern Time.

Mattel U.K. Ltd., Vanwall Business Park, Maidenhead SL6 4UB. Helpline 01628500303.
 Mattel Australia Pty. Ltd., Richmond, Victoria 3121.
 Consumer Advisory Service 1800 800 812 (valid only in Australia).

Disney's
ATLANTIS
THE LOST EMPIRE
MARTAK™ ACTION SET

CONTENTS

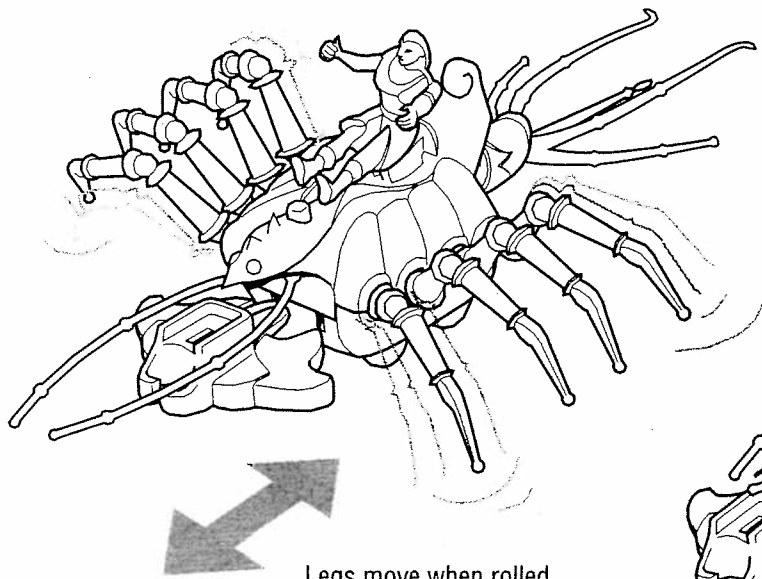
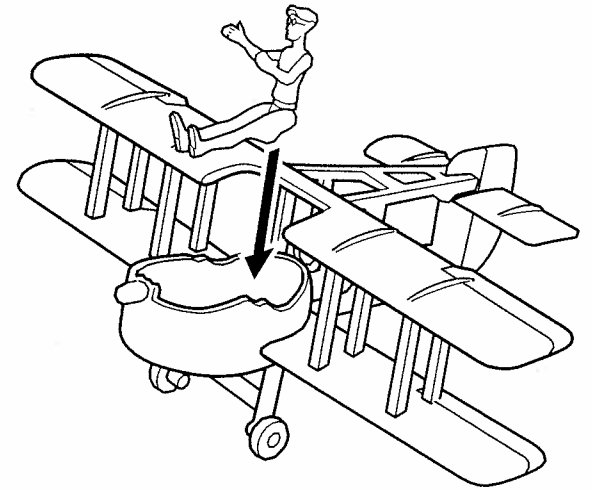
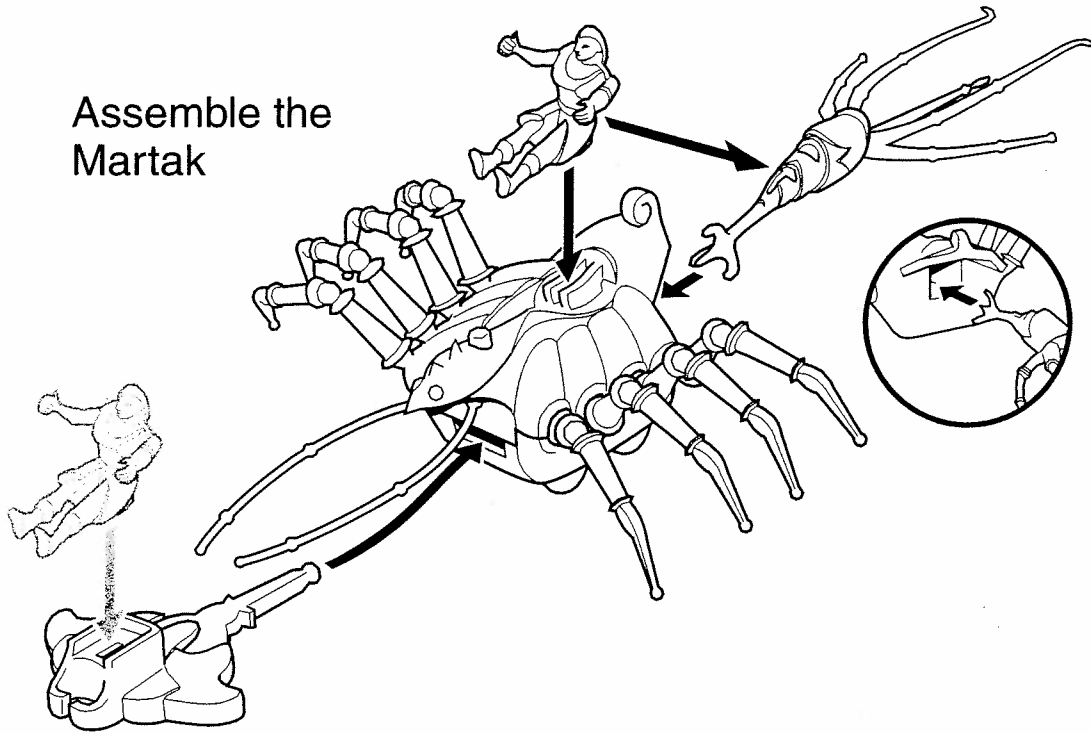
5+



WARNING:
 CHOKING HAZARD - Small parts.
 Not for children under 3 years.

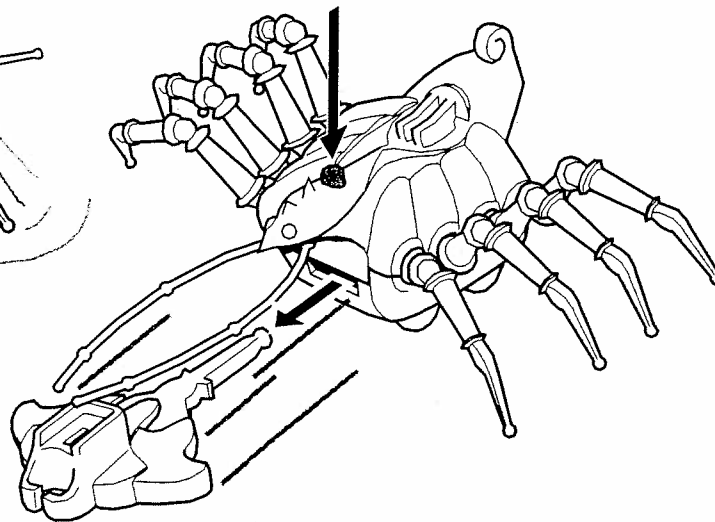
29316-0920

Assemble the Martak



Legs move when rolled forward and back.

Press to launch Baylokh



Only use projectile included with toy.

